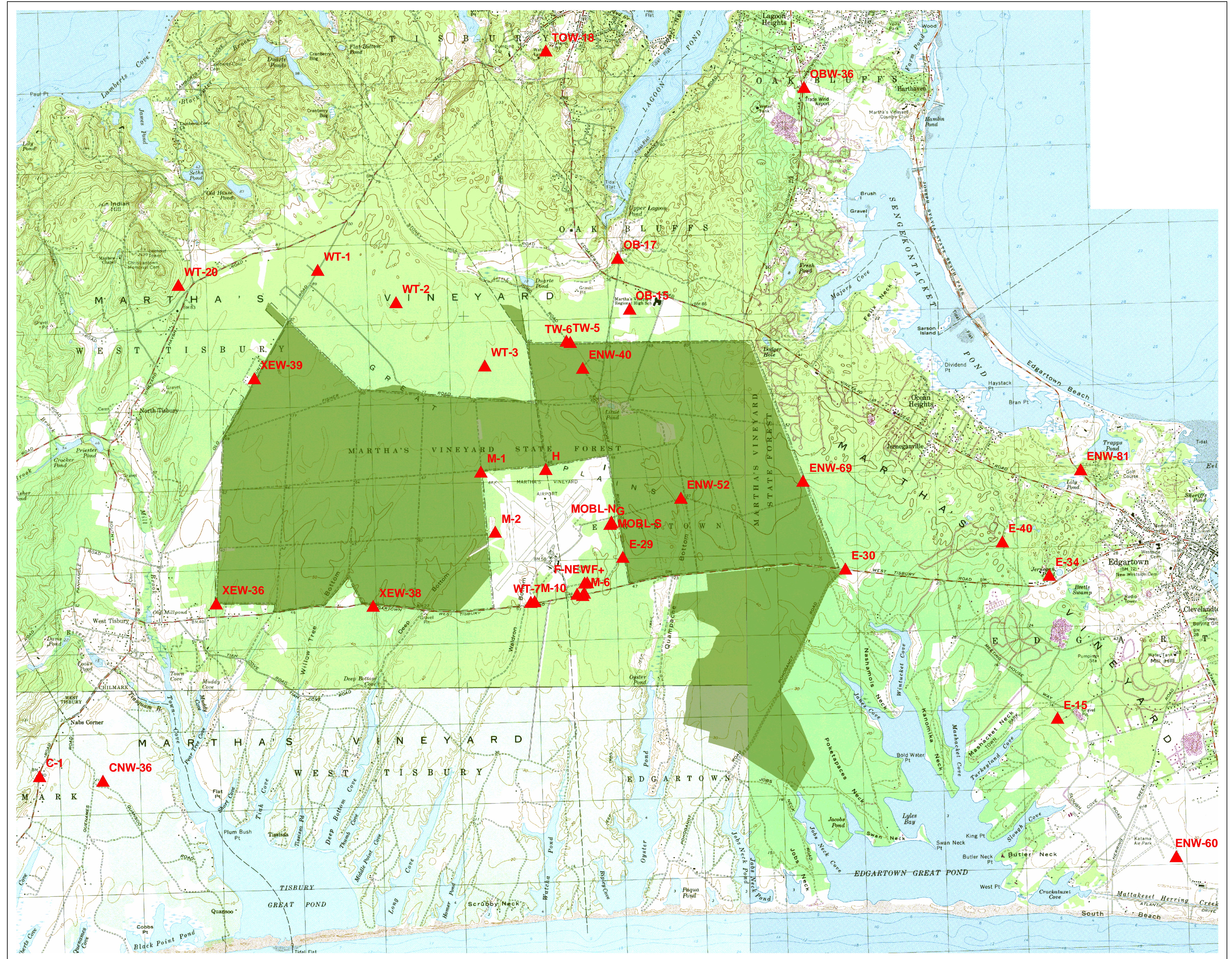




Observation Wells near the M. F. Correllus State Forest



-  M.F. Correllus State Forest
-  Well Location & Identification





Martha's Vineyard Commission, C. Tyminski, copyright August 2002.
 Well locations determined in the field using GPS, July 2002.
 Assessors parcel layer developed by the Vineyard Conservation Society, 1999.
 USGS digital base map provided by MassGIS.
 File - SF_wellsdepth_mod.mxd

This map is a graphic representation only. Exact boundaries must be established in the field and in conjunction with the applicable written boundary description.

This project was funded in part by a grant from the Department of Environmental Management.

