

**Shoreline Change Maps**

Click on Map Image to View or Download

**Wasque Shoreline Change Project Maps**

*Latest Available as of 11/10/15*



The images below are not hotlinked or available for download from the MVC website as of 12/30/15.

The maps below were created with The Coastal Zone Management's historic shoreline data (from 2002 project). It is displayed on aerial photos from either 2005 or 2009. Several coastal areas around the Vineyard are featured on the maps (i.e. Wasque, South Shore, Gay Head, Oak Bluffs Harbor, etc.) The shoreline data is accurate to within 28feet.





# Shoreline Change Gay Head North Shore

Aquinnah, MA

Aerial Photo: Spring 2009

Shoreline  
Year

1845  
1888  
1955  
1979  
1994

\*Positional Accuracy of Shoreline is +/- 28 feet.  
Data provided by CZM - 2002 Shoreline Change Project.

NOTE:  
(per CZM brochure) "Due to the multitude of natural & human-induced factors that can influence shoreline position over time, correct interpretation of the data requires an in-depth knowledge of coastal processes. Those without extensive backgrounds in coastal geology...are strongly advised to consult with a professional when attempting to use the Shoreline Change Project data for planning purposes."

DISCLAIMER  
Data provided are for planning purposes only. The data are not adequate for boundary determination or regulatory interpretation. The MVO cannot be responsible for how these data are used or interpreted by the end user.  
Compiled By: Martha's Vineyard Commission, CL Seidel, 7/25/12.  
Tel: 508-663-3453, www.mvcommission.org  
Data: Shorelines & Transects - CZM 2002, Aerial Photo - MassGIS 2009  
Projection: StatePlane, MA Mainland, NAD83, Meters  
File: ch\_p01r\_22-34\_GayHeadNorth\_Shoreline.mxd  
Original in color



Photo Year 2009





Shoreline  
Change  
Menemsha

Chilmark, MA

Aerial Photo: Spring 2009

Shoreline Year
1845
1888
1955
1979
1994

\*Positional Accuracy of Shoreline is +/- 28 feet.  
Data provided by CZM - 2002 Shoreline Change Project.

NOTE:  
(per CZM brochure) "Due to the multitude of natural & human-induced factors that can influence shoreline position over time, correct interpretation of the data requires an in-depth knowledge of coastal processes. Those without extensive backgrounds in coastal geology...are strongly advised to consult with a professional when attempting to use the Shoreline Change Project data for planning purposes."

DISCLAIMER  
Data provided are for planning purposes only. The data are not adequate for boundary determination or regulatory interpretation. The MVO cannot be responsible for how these data are used or interpreted by the end user.  
Compiled By: Martha's Vineyard Commission, CL Seidel, 7/25/12.  
Data: Shorelines & Transects - CZM 2002; Aerial Photo - MassGIS 2009  
Projection: StatePlane, MA Mainland, NAD83, Meters  
File: ch\_p01r\_22-34\_Menemsha\_Shoreline.mxd  
Original in color



Photo Year 2009





Shoreline  
Change  
Lambert's  
Cove Beach

West Tisbury, MA

Aerial Photo: Spring 2009

Shoreline  
Year  
1955  
1994

\*Positional Accuracy of Shoreline is +/- 28 feet.  
Data provided by CZM - 2002 Shoreline Change Project.

NOTE:  
(per CZM brochure) "Due to the multitude of natural & human-induced factors that can influence shoreline position over time, correct interpretation of the data requires an in-depth knowledge of coastal processes. Those without extensive backgrounds in coastal geology...are strongly advised to consult with a professional when attempting to use the Shoreline Change Project data for planning purposes."

DISCLAIMER:  
Data provided are for planning purposes only. The data are not adequate for boundary determination or regulatory interpretation. The MVC cannot be responsible for how these data are used or interpreted by the end user.  
Compiled by: Martha's Vineyard Commission, 11 Seaside, 725/12, pt. 508-493-3453, www.mvcommission.org  
Data: Shorelines & Transverse - CZM 2000, Aerial Photo - MassGIS 2009  
Projection: StatePlane, MA Mainland, NAD83, Meters  
File: ds\_jpbm\_22931\_Lamberts\_Shoreline.mxd  
Original in color



Photo Year 2009





Shoreline  
Change  
Lake Tashmoo  
Inlet

Tisbury, MA

Pre-Disaster Mitigation Plan

Shoreline  
YEAR  
1955  
1978  
1994

\*Positional Accuracy of Shoreline is +/- 25 feet.  
Data provided by CZM - 2002 Shoreline Change Project.

NOTE:  
(per CZM brochure) "Due to the multitude of natural & human-induced factors that can influence shoreline position over time, correct interpretation of the data requires an in-depth knowledge of coastal processes. Those without extensive backgrounds in coastal geology... are strongly advised to consult with a professional when attempting to use the Shoreline Change Project data for planning purposes."

This map was produced by the Martha's Vineyard Commission for the Pre-Disaster Mitigation Project of June 2007. Funding for the Pre-Disaster Mitigation Planning Grant was provided by the Massachusetts Emergency Management Agency.

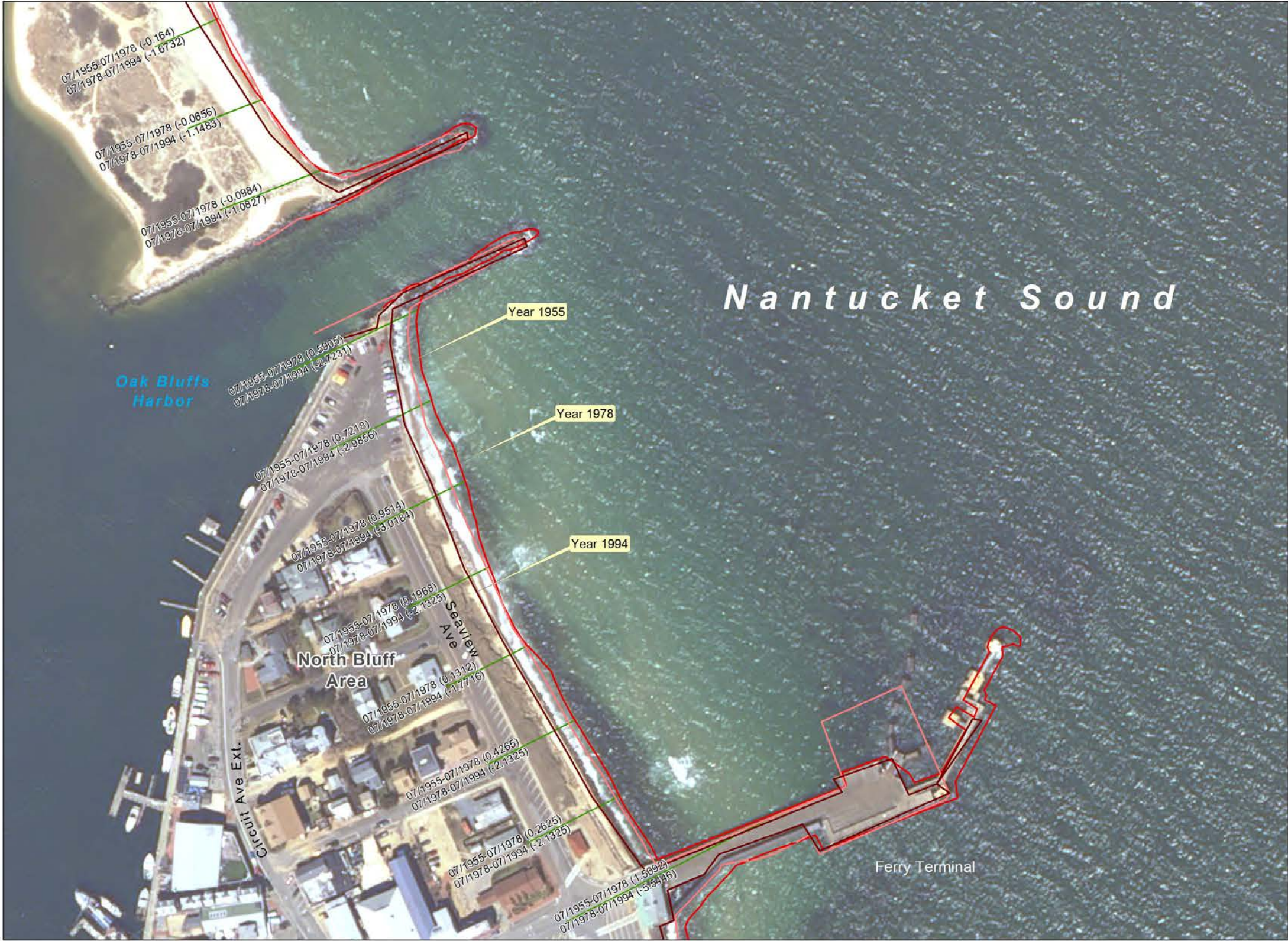
DISCLAIMER:  
Data provided are for planning purposes only. The data are not adequate for boundary determination or regulatory interpretation. The MVC cannot be responsible for how these data are used or interpreted by the end user.

Compiled By: Martha's Vineyard Commission, J. Polak, 6/2007.  
Data: Shorelines & Traverses - CZM 2002; Aerial Photo - MassGIS 2005  
Projection: StatePlane, MA Mainland, NAD83, Meters  
File: s1s\_gdm\_25x34\_tashmoo\_intel.mxd - Original in color



Photo Year 2005





# Shoreline Change Oak Bluffs Harbor Oak Bluffs, MA

## Pre-Disaster Mitigation Plan

Shoreline

YEAR

1955

1978

1994

Survey Transect

\*Horizontal Accuracy of Shoreline is +/- 28 feet  
Data provided by CDM - 2002 Shoreline Change Project

NOTE:  
(per CDM brochure) "Due to the multitude of natural & human induced factors that can influence shoreline position over time, correct interpretation of the data requires an in-depth knowledge of coastal processes. Those without extensive backgrounds in coastal geology... are strongly advised to consult with a professional when attempting to use the Shoreline Change Project data for planning purposes."

This map was produced by the Martha's Vineyard Commission for the Pre-Disaster Mitigation Project of June 2007. Funding for the Pre-Disaster Mitigation Planning Study was provided by the Massachusetts Emergency Management Agency.

DISCLAIMER:  
Data provided are for planning purposes only. The data are not adequate for boundary determination or regulatory interpretation. The MOC cannot be responsible for how these data are used or interpreted by the end user.

Compiled By: Martha's Vineyard Commission, C1, Serial, 4/13/07, p. 5/6/62/1453, www.mvcommission.org  
Data: Shoreline & Transect - CDM 2002, Aerial Photo - MapGIS 2005  
Projection: Sphermerc, NAD83, UTM, Zone 18N  
File: shp\shp\22x14\_Oak\_Bluffs\_Harbor\_Shoreline.mxd - Original in color

20 10 0 20 40

Meters

50 25 0 50 100 150

Feet

N

Massachusetts Executive Office of Environmental Affairs - 2007

Photo Year 2005





# Shoreline Change Pay Beach Oak Bluffs, MA

Pre-Disaster Mitigation Plan

Shoreline YEAR
1955
1978
1994
Survey Transect

\*Positional Accuracy of Shoreline is +/- 28 feet.  
Data provided by CDM - 2002 Shoreline Change Project

NOTE:  
(per CDM brochure) "Due to the multitude of natural & human-induced factors that can influence shoreline position over time, correct interpretation of the data requires an in-depth knowledge of coastal processes. Those without extensive backgrounds in coastal geology are strongly advised to consult with a professional when attempting to use the Shoreline Change Project data for planning purposes."

This map was produced by the Martha's Vineyard Commission for the Pre-Disaster Mitigation Project of June 2007.  
Funding for the Pre-Disaster Mitigation Planning Grant was provided by the Massachusetts Emergency Management Agency.

DISCLAIMER:  
Data provided are for planning purposes only. The data are not adequate for boundary determination or regulatory interpretation. The MEC cannot be responsible for how these data are used or interpreted by the end user.

Compiled By: Martha's Vineyard Commission | Roll#\_A/19/07,  
pl: 508.693.3453, www.mvcommission.org  
Data: Shorelines & Transects - CDM 2002, Aerial Photo - NOAA 2005  
Projection: Transverse Mercator, NAD83, Meters  
File: ch\_rdr: 2534\_Pay\_Beach\_Shoreline.mxd - Original in color



Photo Year 2005





# Shoreline Change Wasque Point

Edgartown, MA

Pre-Disaster Mitigation Plan

Shoreline

YEAR

1955

1978

1994

\*Positional Accuracy of Shoreline is +/- 28 feet.  
Data provided by CZM - 2002 Shoreline Change Project.

NOTE:  
(per CZM brochure) "Due to the multitude of natural & human-induced factors that can influence shoreline position over time, correct interpretation of the data requires an in-depth knowledge of coastal processes. Those without extensive backgrounds in coastal geology...are strongly advised to consult with a professional when attempting to use the Shoreline Change Project data for planning purposes."

This map was produced by the Martha's Vineyard Commission for the Pre-Disaster Mitigation Project of June 2007. Funding for the Pre-Disaster Mitigation Planning Grant was provided by the Massachusetts Emergency Management Agency.

DISCLAIMER:  
Data provided are for planning purposes only. The data are not adequate for boundary determination or regulatory interpretation. The MVC cannot be responsible for how these data are used or interpreted by the end user.

Compiled By: Martha's Vineyard Commission, J Polak, 6/2007.  
ph: 508-493-3453; www.mvcommission.org  
Data: Shorelines & Trenches - CZM 2002; Aerial Photo - MassGIS 2005  
Projection: StatePlane MA Mainland, NAD83, Meters  
File: cs\_gdr\_22534\_Wasque\_Point\_Shoreline.mxd - Original in color

250 0 250 500 750 1,000

Feet

100 0 100 200 300

Meters

N



Photo Year 2005





# Shoreline Change Southern Edgartown

## Edgartown, MA

### Pre-Disaster Mitigation Plan

Shoreline

YEAR

1955

1978

1994

\*Positional Accuracy of Shoreline is +/- 28 feet.

Data provided by CZM - 2002 Shoreline Change Project.

NOTE:  
(per CZM brochure) "Due to the multitude of natural & human-induced factors that can influence shoreline position over time, correct interpretation of the data requires an in-depth knowledge of coastal processes. Those without extensive backgrounds in coastal geology... are strongly advised to consult with a professional when attempting to use the Shoreline Change Project data for planning purposes."

This map was produced by the Martha's Vineyard Commission for the Pre-Disaster Mitigation Project of June 2007. Funding for the Pre-Disaster Mitigation Planning Grant was provided by the Massachusetts Emergency Management Agency.

DISCLAIMER:  
Data provided are for planning purposes only. The data are not adequate for boundary determination or regulatory interpretation. The MVC cannot be responsible for how these data are used or interpreted by the end user.

Compiled by: Martha's Vineyard Commission, J. Pollak, 6/19/07, job: 500-699-3453, www.mvcommission.org  
Data: Shorelines & Transects - CZM 2002 Aerial Photo - MassGIS 2005  
Projection: StatePlane, MA Mainland, NAD83, Meters  
File: c:\\_pdm\_22x34\_southside\_edgartown\_shorelines.mxd  
Original in color

0 260 520 Feet

0 100 200 Meters

N



Photo Year 2005





# Shoreline Change Squibnocket Beach

Chilmark, MA  
Aerial Photo: Spring 2009

Shoreline Year
1888
1955
1979
1994

\*Positional Accuracy of Shoreline is +/- 26 feet.  
Data provided by CZM 2002 Shoreline Change Project.

NOTE:  
(per CZM brochure) "Due to the multitude of natural & human-induced factors that can influence shoreline position over time, correct interpretation of the data requires an in-depth knowledge of coastal processes. Those without extensive backgrounds in coastal geology...are strongly advised to consult with a professional when attempting to use the Shoreline Change Project data for planning purposes."

DISCLAIMER:  
Data provided are for planning purposes only. The data are not adequate for boundary determination or regulatory interpretation. The MVC cannot be responsible for how these data are used or interpreted by the end user.

Compiled By: Martha's Vineyard Commission, CL Seidel, 5/18/10  
URL: 508-693-3433, [www.mvcommission.org](http://www.mvcommission.org)  
Data: Shorelines & Trenches - CZM 2002, Aerial Photo - MavGIS 2009  
Project: Squibnocket, MA Mainland, NAD83, Meters  
File: ch\_pdm\_77x74\_Squibnocket\_Shoreline.mxd  
Original in color

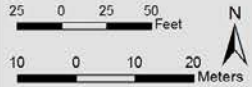


Photo Year 2009





# Shoreline Change Squibnocket Point

Chilmark, MA

Aerial Photo: Spring 2009

Shoreline
Year
1845
1888
1955
1979
1994

\*Positional Accuracy of Shoreline is +/- 28 feet.  
Data provided by CZM - 2002 Shoreline Change Project.

NOTE:  
(per CZM brochure) "Due to the multitude of natural & human-induced factors that can influence shoreline position over time, correct interpretation of the data requires an in depth knowledge of coastal processes. Those without extensive backgrounds in coastal geology...are strongly advised to consult with a professional when attempting to use the Shoreline Change Project data for planning purposes."

DISCLAIMER:  
Data provided are for planning purposes only. The data are not adequate for boundary determination or regulatory interpretation. The MVC cannot be responsible for how these data are used or interpreted by the end user.

Compiled By: Martha's Vineyard Commission, CL Seidel, 7/25/12,  
ph: 508-650-5450, www.mvcommission.org  
Data: Shorelines & Transects - CZM 2002, Aerial Photo - MassGIS 2009  
Projection: StatePlane MA Mainland, NAD83, Meters  
File: c:\s\_pdm\_225\34\_SquibbyPt\_Shoreline.mxd  
Original in color

50 0 50 100

Feet

25 0 25 50

Meters

N

↑



MARTHA'S VINEYARD  
COMMISSION



MASS GIS  
Massachusetts Geographic Information System  
Massachusetts Executive Office of Environmental Affairs 2007

Photo Year 2009





# Shoreline Change Gay Head

Aquinnah, MA

Aerial Photo: Spring 2009

Shoreline Year
1845
1888
1955
1979
1994

\*Positional Accuracy of Shoreline is +/- 26 feet.  
Data provided by CZM 2002 Shoreline Change Project.

NOTE:  
(per CZM brochure) "Due to the multitude of natural & human-induced factors that can influence shoreline position over time, correct interpretation of the data requires an in-depth knowledge of coastal processes. Those without extensive backgrounds in coastal geology, are strongly advised to consult with a professional when attempting to use the Shoreline Change Project data for planning purposes."

DISCLAIMER:  
Data provided are for planning purposes only. The data are not adequate for boundary determination or regulatory interpretation. The MVC cannot be responsible for how these data are used or interpreted by the end user.  
Compiled by: Martha's Vineyard Commission, 01 Seidel, 7/25/12, at: 508-685-3453, www.mvcommission.org  
Data: Shorelines & Transsects - CZM 2002, Aerial Photo - MarsGIS 2009  
Projection: NAD83, MA State Plane, NAD83, Meters  
File: ch\_pdm\_27x34\_01ayhead\_shoreline.mxd  
Original in color

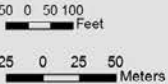


Photo Year 2009



